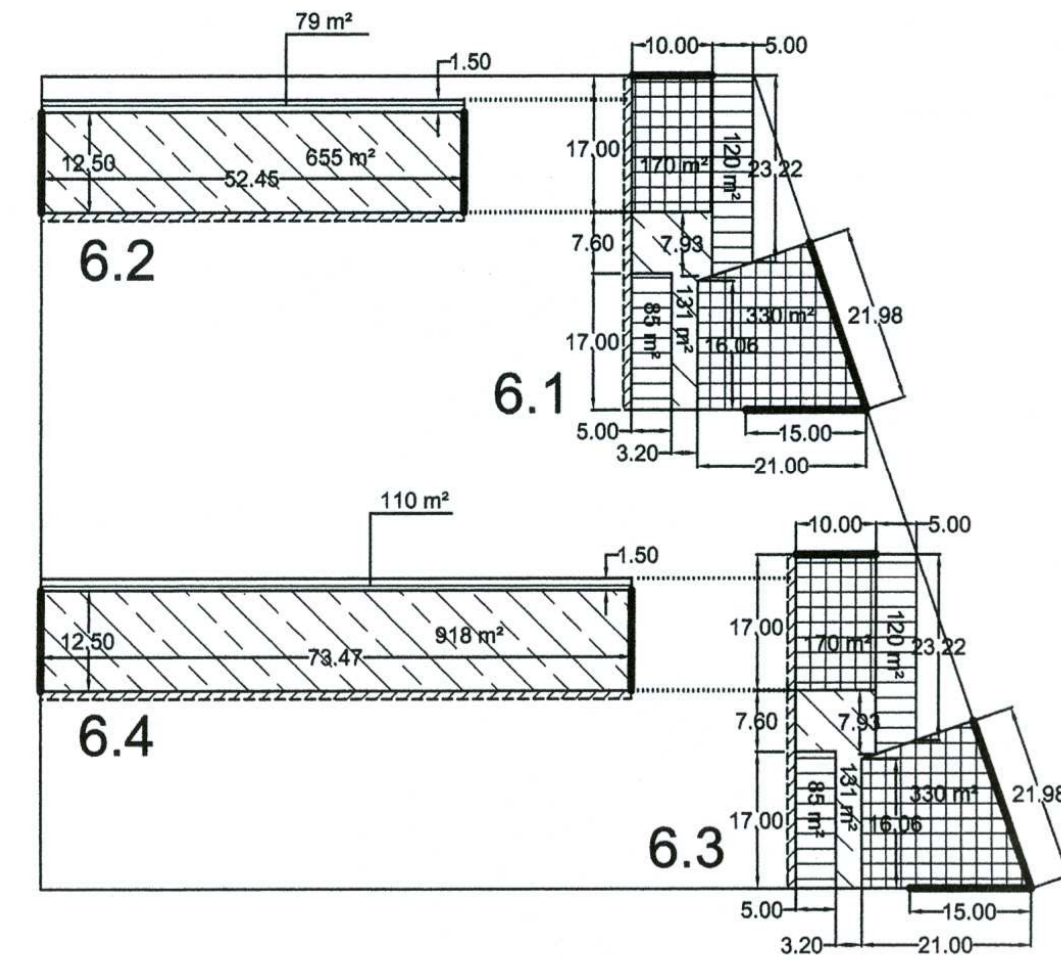
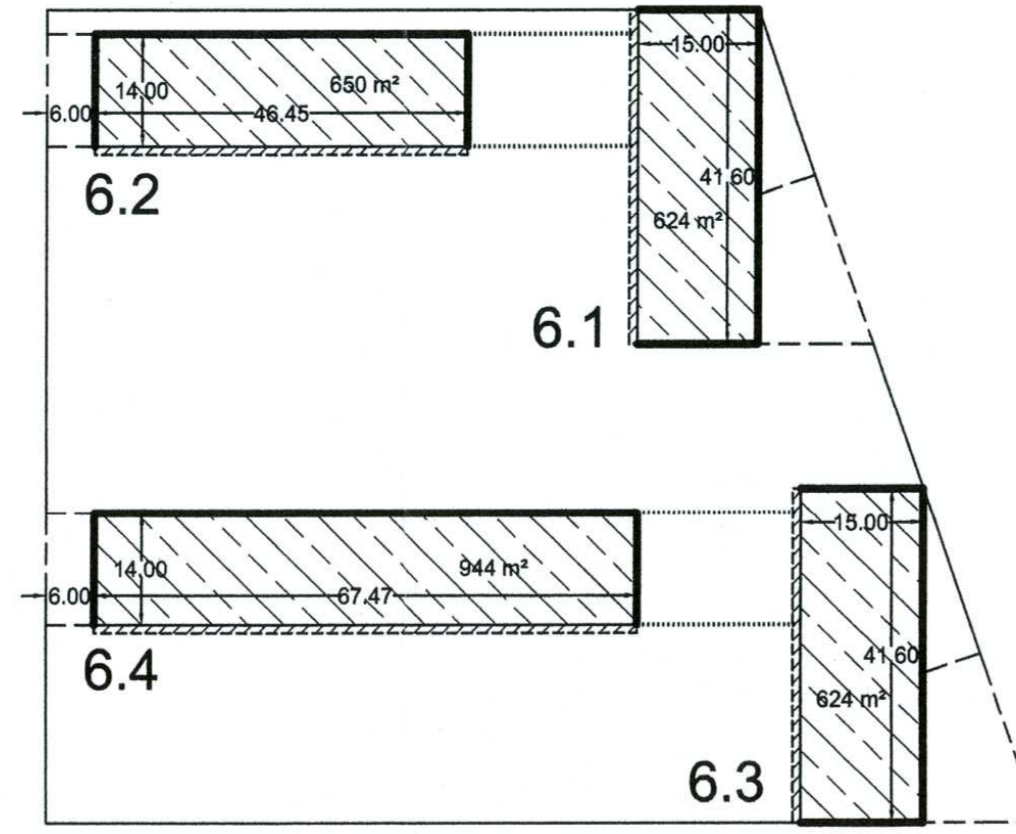


MANZANA 6



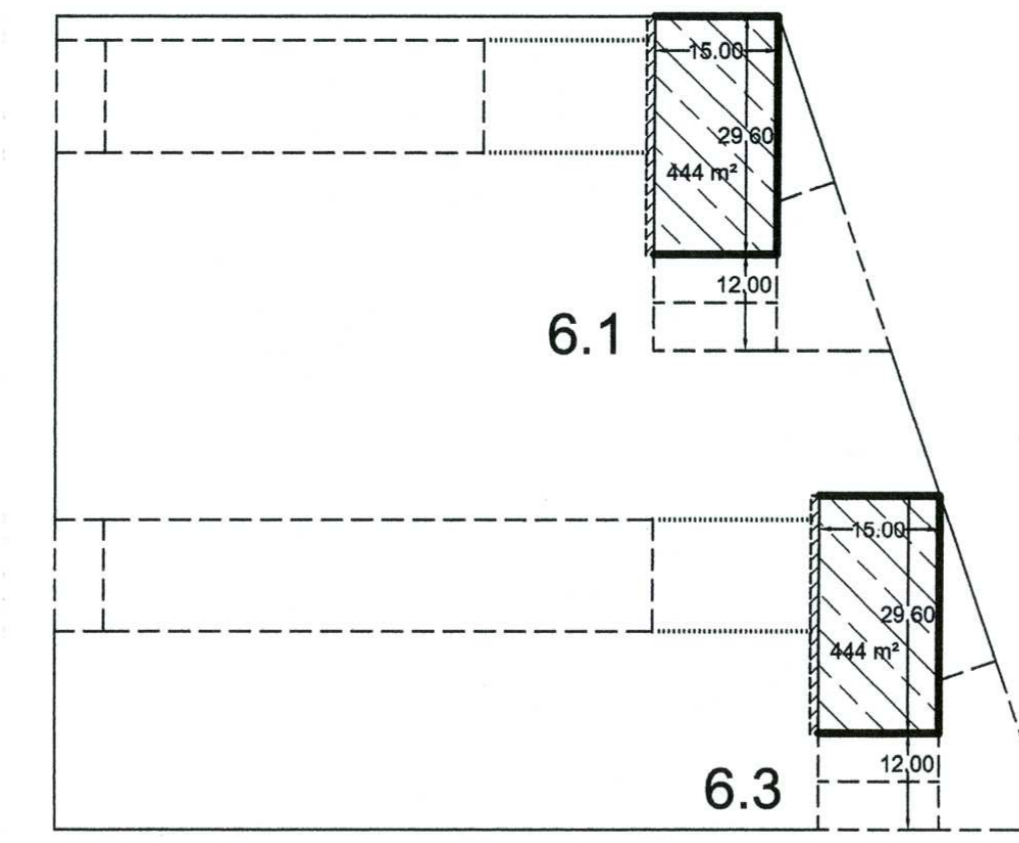
PB

| PB | RES | TER | TOTAL |
|--------------|-----------------|-----------------|-----------------|
| 6.1 | 131 m² | 500 m² | 631 m² |
| 6.2 | 655 m² | - | 655 m² |
| 6.3 | 131 m² | 500 m² | 631 m² |
| 6.4 | 918 m² | - | 918 m² |
| TOTAL | 1.835 m² | 1.000 m² | 2.835 m² |



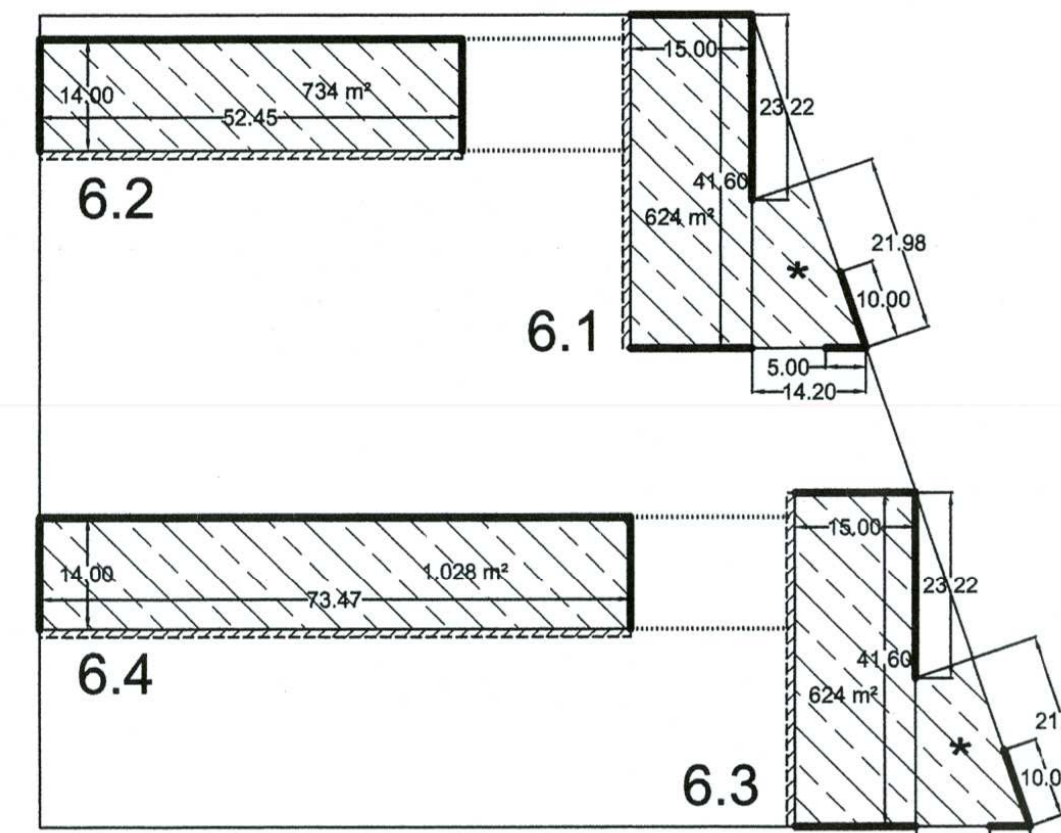
P8

| P. 8 | RES |
|--------------|-----------------|
| 6.1 | 624 m² |
| 6.2 | 650 m² |
| 6.3 | 624 m² |
| 6.4 | 944 m² |
| TOTAL | 2.842 m² |



P12

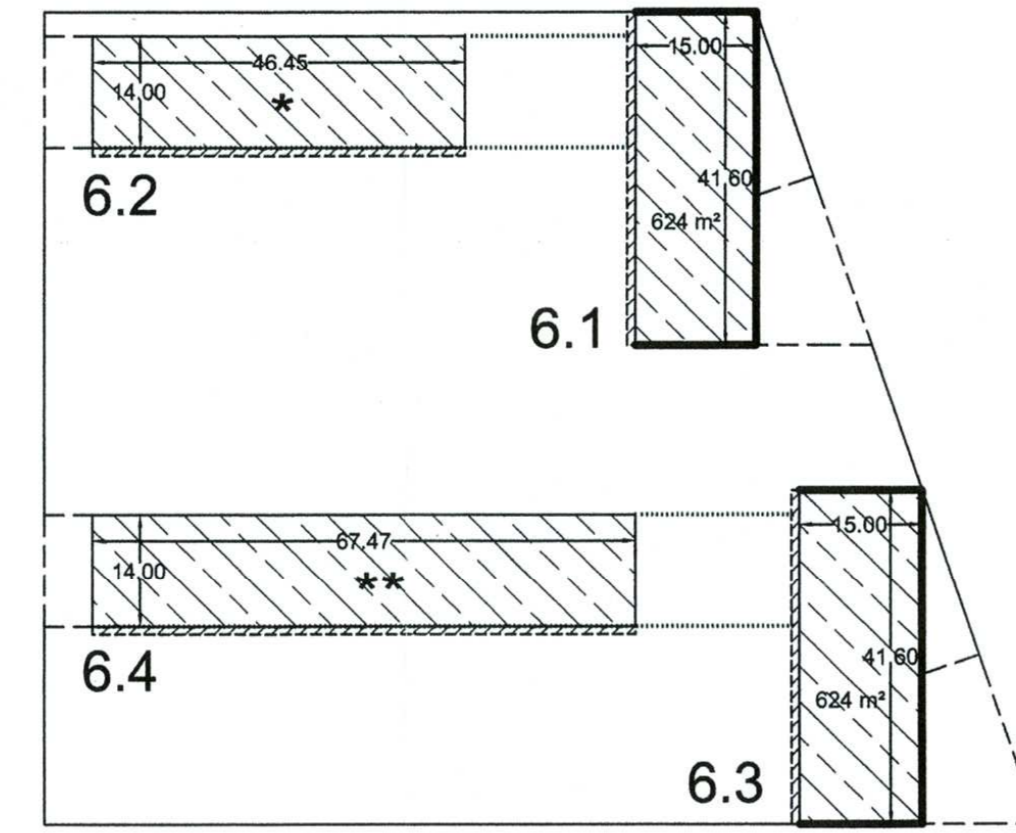
| P. 12 | RES |
|--------------|---------------|
| 6.1 | 444 m² |
| 6.3 | 444 m² |
| TOTAL | 888 m² |



P1

* Superficie construida = 60 m²
(Art. 7.7 de las Ordenanzas del P.R.I.)

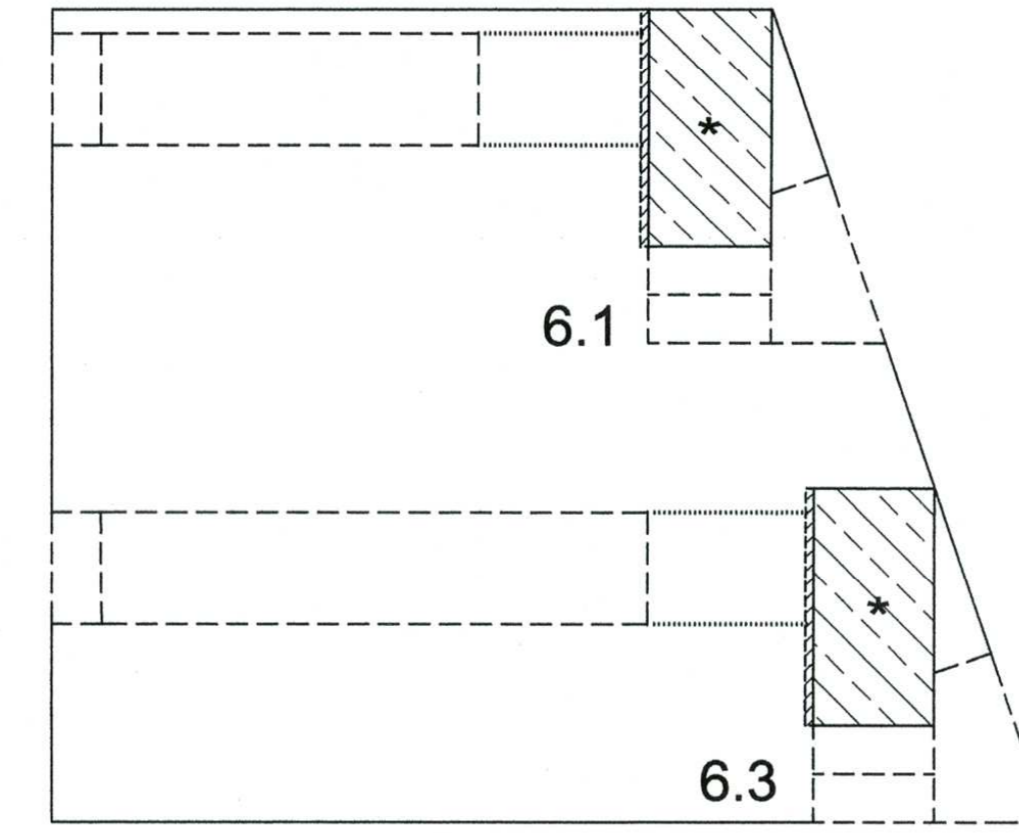
| P. 1 | RES |
|--------------|-----------------|
| 6.1 | 684 m² |
| 6.2 | 734 m² |
| 6.3 | 684 m² |
| 6.4 | 1.028 m² |
| TOTAL | 3.130 m² |



P9

* Superficie construida = 0.75 x 650 = 487 m²
(Art. 7.2 de las Ordenanzas del P.R.I.)
** Superficie construida = 0.75 x 945 = 708 m²
(Art. 7.2 de las Ordenanzas del P.R.I.)

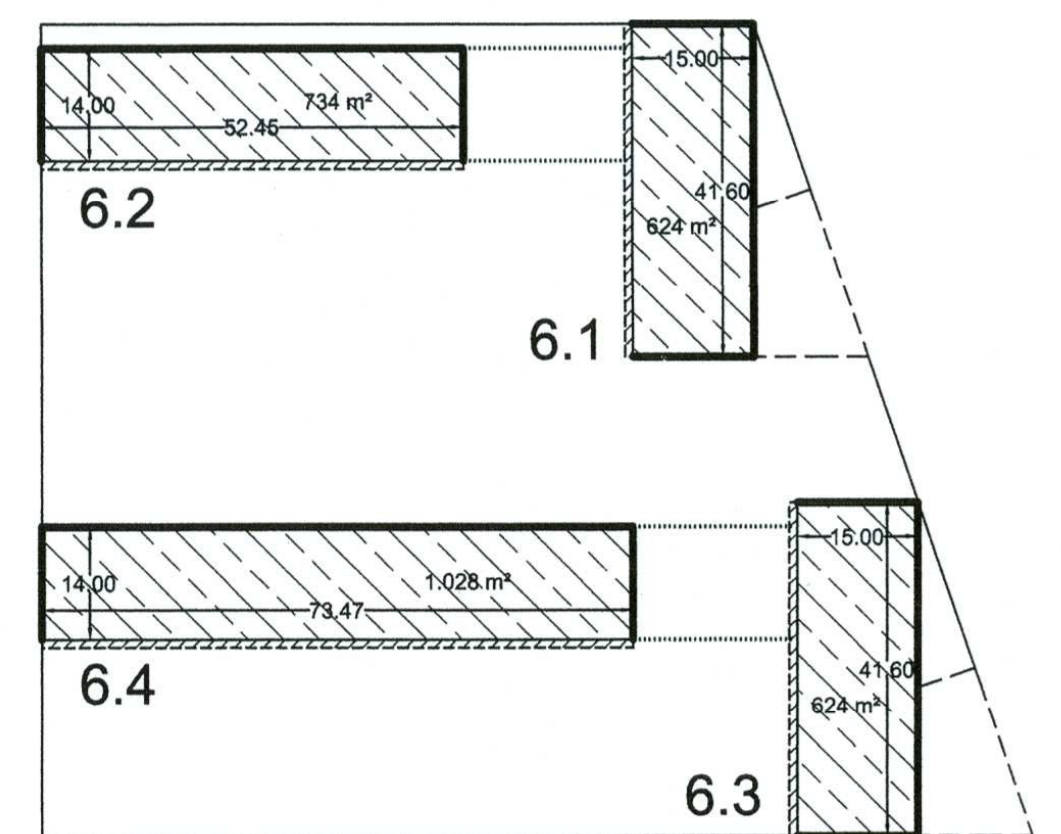
| P. 9 | RES |
|--------------|-----------------|
| 6.1 | 624 m² |
| 6.2 | 487 m² |
| 6.3 | 624 m² |
| 6.4 | 708 m² |
| TOTAL | 2.443 m² |



P13

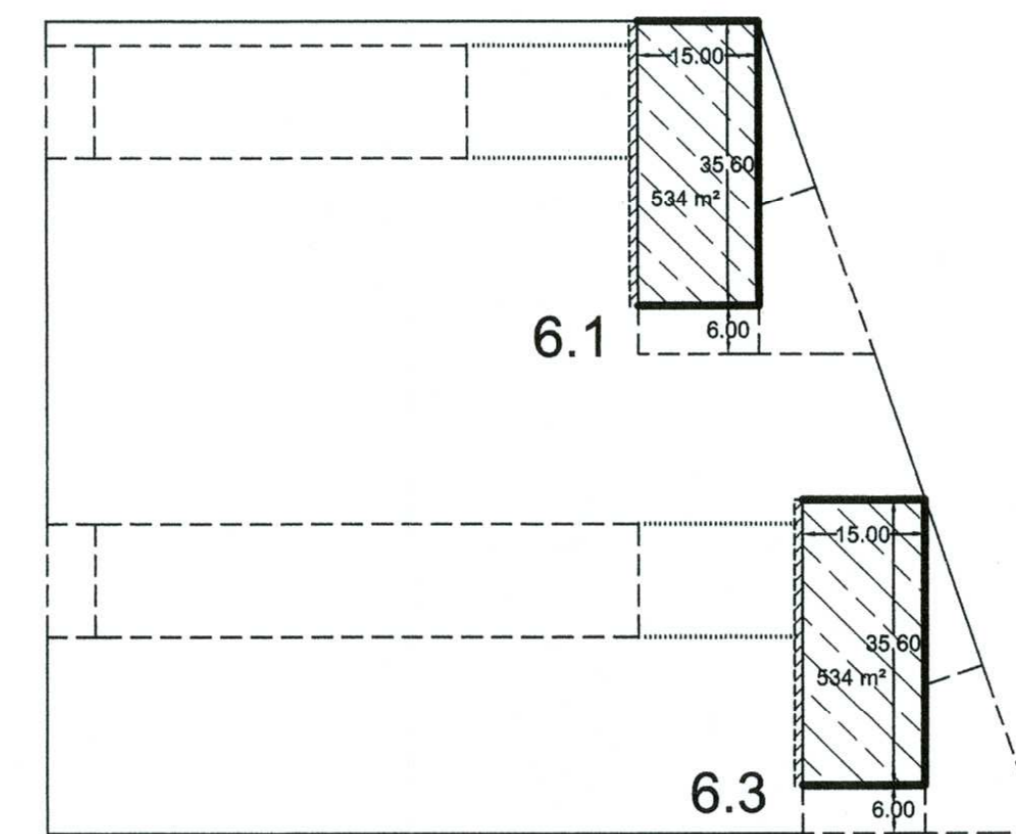
* Superficie construida = 0.75 x 444 = 333 m²
(Art. 7.2 de las Ordenanzas del P.R.I.)

| P. 13 | RES |
|--------------|---------------|
| 6.1 | 333 m² |
| 6.3 | 333 m² |
| TOTAL | 666 m² |



P2-P7

| P. 2-7 | RES |
|--------------|-----------------|
| 6.1 | 624 m² |
| 6.2 | 734 m² |
| 6.3 | 624 m² |
| 6.4 | 1.028 m² |
| TOTAL | 3.010 m² |




P10-P11

| P. 10-11 | RES |
|--------------|-----------------|
| 6.1 | 534 m² |
| 6.3 | 534 m² |
| TOTAL | 1.068 m² |

- Terciario
- Residencial
- Superficie no computable. (Art. 5.22.2 del P.G.O.U.)
- Alineación de edificación vinculante
- Alineación de edificación no vinculante
- Área de movimiento de la edificación = 1m
- Porche abierto en planta baja
- Proyección de la edificación

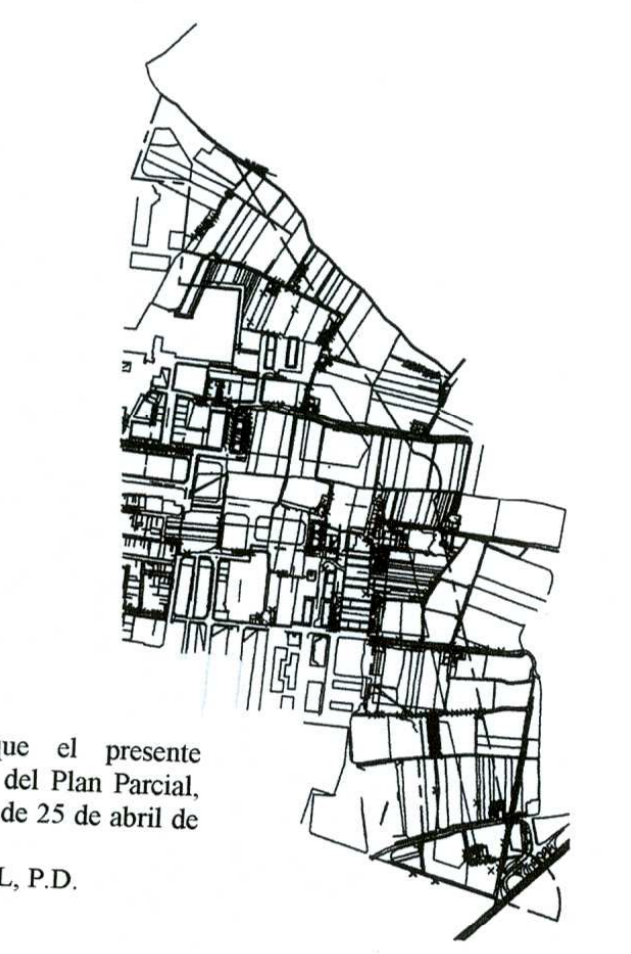
| Plantas | MANZANA 6 | | | | Totales |
|------------------------|--------------|--------------|--------------|--------------|---------------|
| | Bloque 6.1 | Bloque 6.2 | Bloque 6.3 | Bloque 6.4 | |
| P.13 RES. | 333 | | 333 | | 666 |
| P.12 RES. | 444 | | 444 | | 888 |
| P.11 RES. | 534 | | 534 | | 1.068 |
| P.10 RES. | 534 | | 534 | | 1.068 |
| P.9 RES. | 624 | 487 | 624 | 708 | 2.443 |
| P.8 RES. | 624 | 650 | 624 | 944 | 2.842 |
| P.7 RES. | 624 | 734 | 624 | 1.028 | 3.010 |
| P.6 RES. | 624 | 734 | 624 | 1.028 | 3.010 |
| P.5 RES. | 624 | 734 | 624 | 1.028 | 3.010 |
| P.4 RES. | 624 | 734 | 624 | 1.028 | 3.010 |
| P.3 RES. | 624 | 734 | 624 | 1.028 | 3.010 |
| P.2 RES. | 624 | 734 | 624 | 1.028 | 3.010 |
| P.1 RES. | 684 | 734 | 684 | 1.028 | 3.130 |
| P.B. RES. | 131 | 655 | 131 | 918 | 1.835 |
| subtotal RES. | 7.652 | 6.930 | 7.652 | 9.766 | 32.000 |
| P.B. TER. | 500 | | 500 | | 1.000 |
| TOTAL EDIFICAB. | 8.152 | 6.930 | 8.152 | 9.766 | 33.000 |



 JOSE R. CRESCO CHAMPION
 ARQUITECTO

**DOCUMENTO REFUNDIDO DEL PLAN PARCIAL
Y DEL PLAN DE REFORMA INTERIOR**
 UNIDAD DE EJECUCION UNICA DEL AREA
 DEL S.U.P.-T4 "BENIMACLET"
 DEL P.G.O.U. DE VALENCIA

PLAN PARCIAL
 BENIMACLET

S.U.P.-T4
 BENIMACLET





26 JUN. 2003
VISADO
ESTATUTARIO

Diligencia - Para hacer constar que el presente documento forma parte del Expediente Refundido del Plan Parcial S.U.P.-T4, Benimaclet, según acuerdo plenario de 25 de abril de 2003.

EL SECRETARIO GENERAL, P.D.

JUNIO 2003

PLANO
 EDIFICABILIDADES
 MANZANA 6

Nº PLANO
 8

ESCALA
 1/1000

 PROMOTOR
 BENIMACLET ESTE S.A.