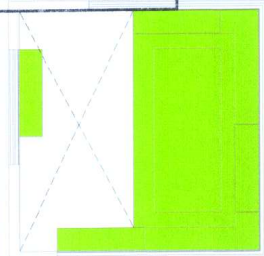


GENERALITAT VALENCIANA  
 CONSSELLERIA DE MEDI AMBIENT, AIGUA, URBANISME I HABITATGE  
 APROBACIÓ DEFINITIVA PER RESOLUCIÓ DE  
 FECHA - 2 MAR. 2010 DEL  
 HBLE. SR. CONSELLER DE  
 MEDI AMBIENT, AIGUA, URBANISME I HABITATGE  
**BERKLEE SGAE**



BERKLEE -----> [Green Box]  
 SGAE -----> [Red Box]  
 Shared -----> [Blue Box]

**PROGRAM\_LEVEL 14**

| PROGRAM                                      | NET_M2           | GROSS_M2       |
|--|------------------|----------------|
| Acoustic & Tech. Systems Innovation & Design | 114,56 m2        | 123 m2         |
| Graduate Audio Research Room                 | 32,91 m2         | 38 m2          |
| Classroom 15 Large                           | 55,81 m2         | 61 m2          |
| Classroom 16 Large                           | 55,81 m2         | 61 m2          |
| Classroom 17 Large                           | 55,81 m2         | 61 m2          |
| Storage                                      | 23,70 m2         | 28 m2          |
| Restrooms                                    | 28,65 m2         | 35 m2          |
| Installations                                | 22,44 m2         | 49 m2          |
| Server room                                  | 5,20 m2          | 7 m2           |
| Circulations                                 | 202,59 m2        | 538 m2         |
| <b>TOTAL</b>                                 | <b>597,48 m2</b> | <b>1001 m2</b> |

Conselloria d'Ordenació del Territori  
 València  
 10 DES. 2009

BERKLEE - SGAE TOWER OF MUSIC JULY 2008  
 Author: ANTON GARCIA-ABRIL, RUIZ & ENSEMBLE STUDIO Scale: 1:200  
 Architect: ANTON GARCIA-ABRIL, RUIZ & ENSEMBLE STUDIO

Plan Title: lower floor plan 14, level +55,80 Plan Number: **PT14**  
 3/11